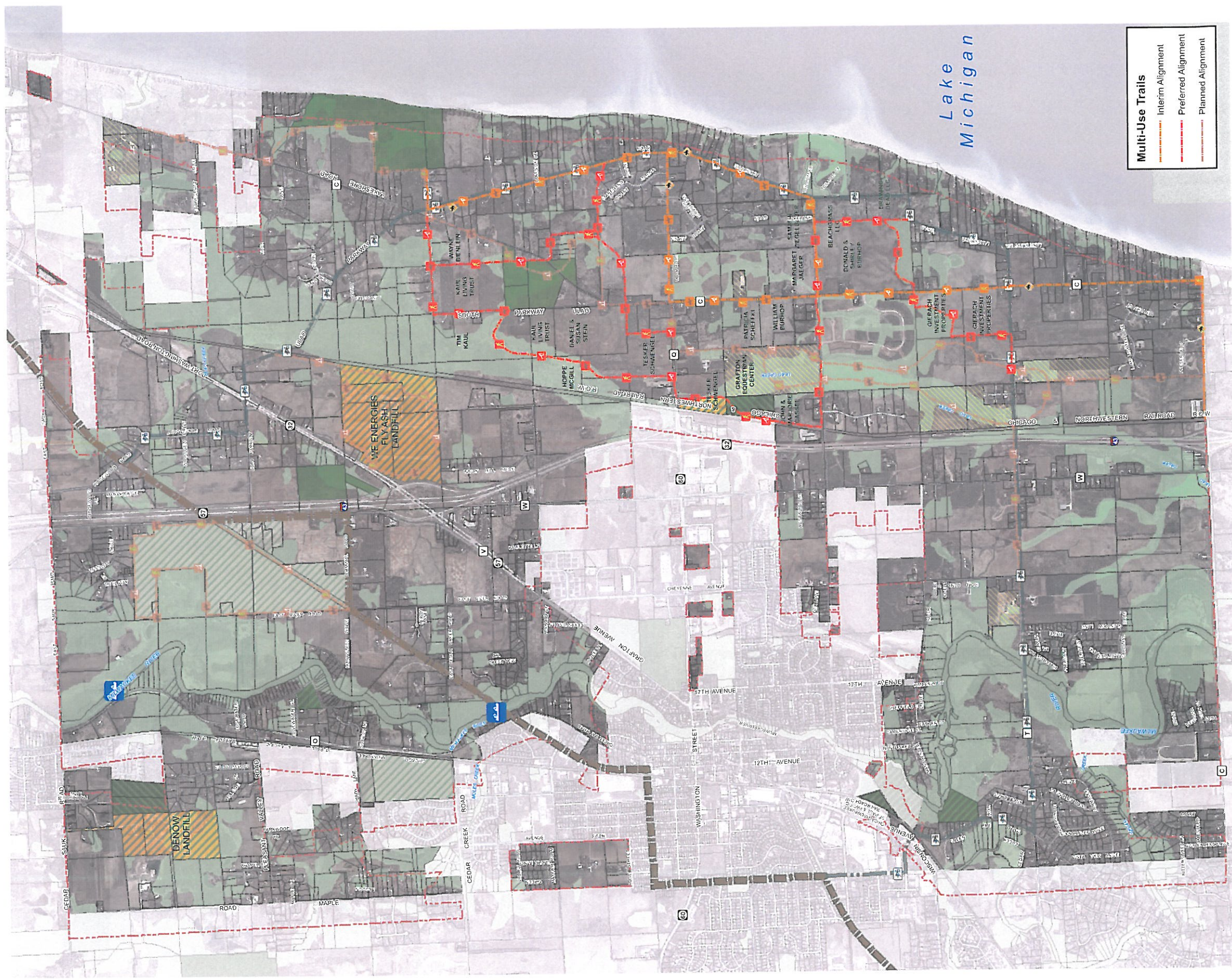


Town of Grafton Open Space Preservation Overlay Map Multi-Use Trail Alignments



Legend

- Horse Signs
- Waterway
- Town Limits
- RailwayLine
- Bicycle Route
- Ozaukee County InterUrban Trail
- Hiking, Equestrian & Cross Country Skiing Trail
- Canoe Launch
- Proposed & Private Open Space, Environmental Corridors, Wetlands and Drainageways
- Existing Preserved Private Open Space (OWLT) & Private Parks
- Existing Public Open Space
- Golf Courses
- Equestrian Centers
- Landfill
- Potential Passive Park

Source: Bonestroot, Ozaukee County, Southeastern Wisconsin Regional Planning Commission, Ozaukee Washington Land Trust, Wisconsin Department of Natural Resources, & Federal Emergency Management Agency

1 inch = 1,400 feet

